

# Women in Physics seen in the Survey on Research environment in JPS



Nojiri, Mihoko M.<sup>1,2</sup>, Itakura, Akiko N.<sup>1,3</sup>, Nonaka, Chihoko<sup>1,4</sup>, Sasao, Mamiko<sup>1,5</sup>  
<sup>1</sup>The Physical Society of Japan, 2-31-22, <sup>2</sup>High Energy Accelerator Research Organization(KEK), <sup>3</sup>National Institute for Materials Science, <sup>4</sup>Hiroshima University, <sup>5</sup>Doshisha University

## The survey of the Physical Society of Japan (JPS) :

In 2018, the Japan Physics Society (JPS) performed a survey of members on the research funding. The survey aims to check the working environment, including funding, the FTE for research and educations, and their correlation of the University groups (National University, National research institutions, private University)

## Who responded the survey

Among ~16000 JPS members, 1515 answered the survey, including 416 professors and 496 associate professors. Total women member JPS of 524 in the age group 30-60 in 2018, while the 96 women members answered the survey.

## Who is Tenured?:

The survey shows increasing burdens on research, education, management, and government policy to reduce the University's regular funding. The fraction of untenured faculty increased significantly for the younger generation. For example, 1/3 of the respondents at age around 40 are not tenured now. Female untenured fraction is higher than male for all age group. (Fig 1).

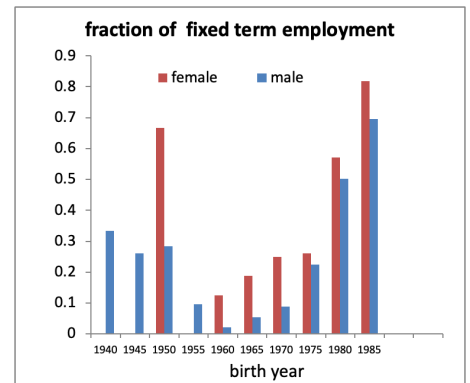


Fig 1. fraction of untenured member in gender

## Is this fair competition?:

We found women are spending more time on house keeping works while more than half of male spending less than 10% of working day for house keeping works, pushing research, education and management activity of female. (Fig.2)

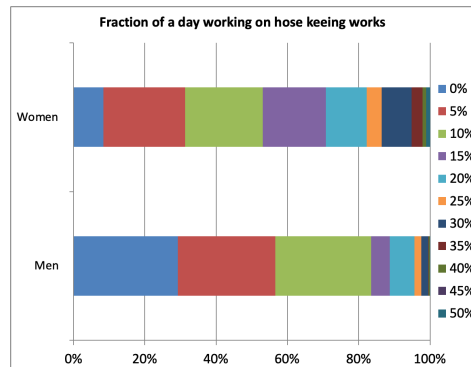


Fig 2. unfair competition

## Work and life Valance?

We also found extremely long working hours. We show the figure for the time excluding education, research, management and house keeping work. (~ other activity including sleeping.) Nearly 30% of the responder considers it is less than 30% for working day. (Fig. 3)

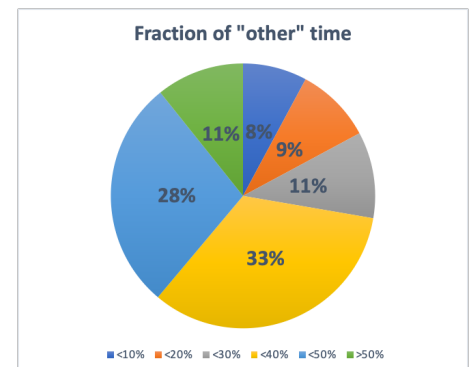


Fig 3 work and life balance

## Under Covid 19:

JPS is a member of Japan Inter Society Liaison Association for equal participation of Men and Women.(EPMEWSE).

The EPMEWSE conducted survey during May 15 to June 13 on the effect of Emergency Declaration due to Covid 19. (Respondent Male 7882 Female 3141. All STEM field) The survey shows the burden to work from home is especially high for female researchers. 30% of female feel house

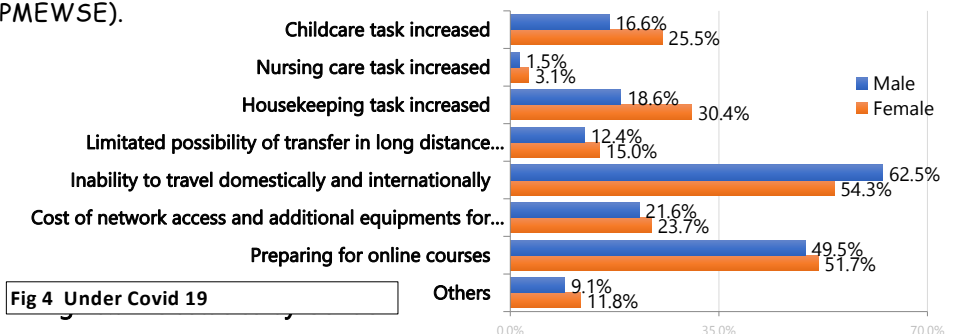


Fig 4 Under Covid 19